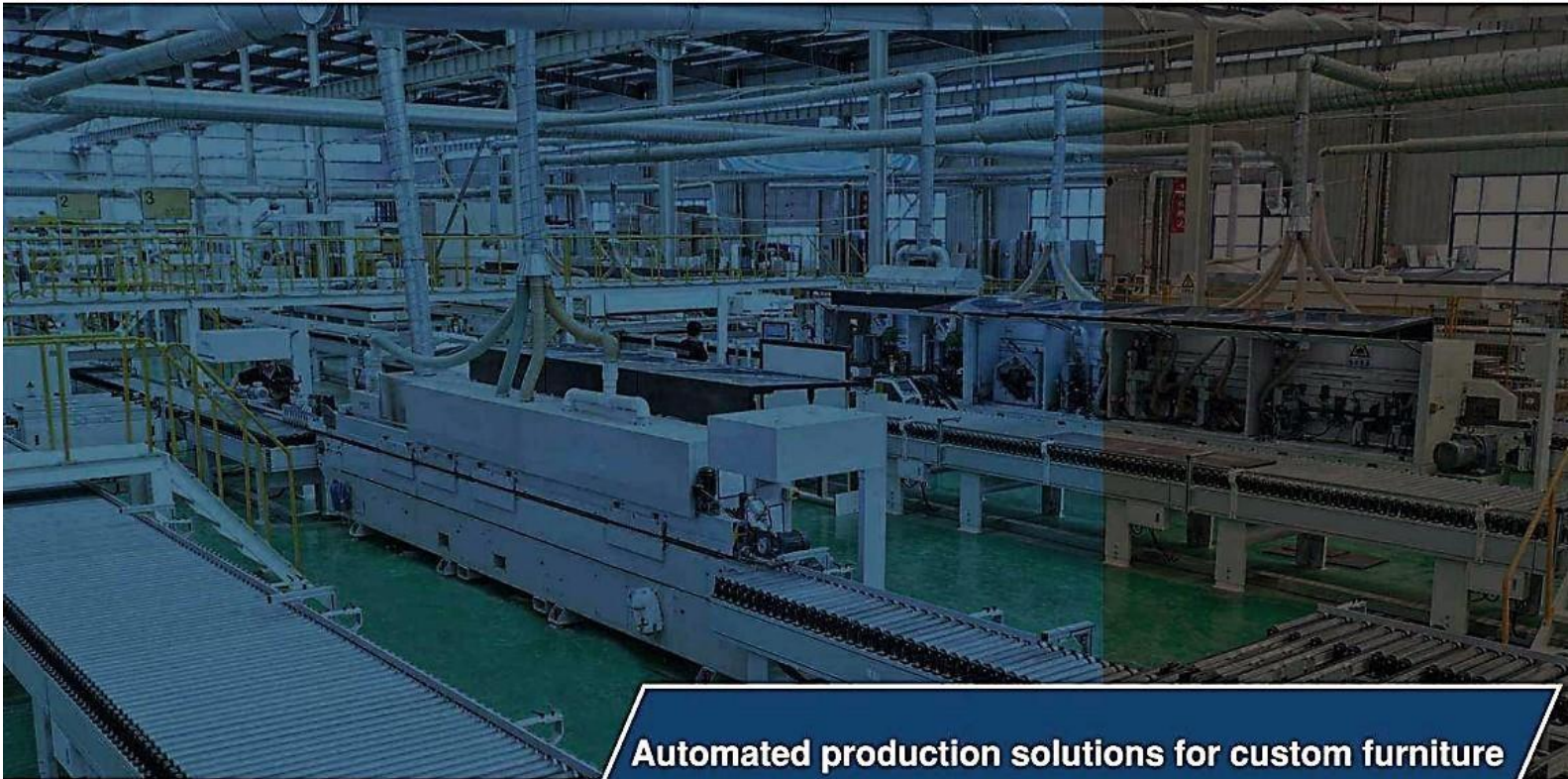


# Lekon

Woodworking Machinery



Automated production solutions for custom furniture

**Proposal #:** xxxxxxxx

**Date:** xxxxxxxx

Proposal valid for 30 days

**Sales Rep:** xxxxxxxx. xxxxxxxxxxxxxx

**Phone:** (xxx) xxx-xxxx

**Email:** xxxxxx@lekon.ca

## CNC Nesting Center LN2

Prepared for xxxxxxxx

[www.lekon.ca](http://www.lekon.ca)



Lekon

# Lekon Nesting Table LN1

**\$XX,XXX CAD**



The product image is for illustrative purposes only.

The actual machine delivered may differ in colour, markings or design from what is shown in the image.

## Features

- The CNC nesting machine operates with minimal visible dust. After processing, the panel's surface, backside, groove interiors, and the area around the machine remain spotless and dust-free.
- Equipped with world-class components, the machine features an Italian high-frequency electronic spindle, advanced control system, precision helical rack and pinion drives, a drill bank, high-quality German and French electronic parts, Japanese linear guides, servo motors and drivers, pneumatic components, and a high-precision planetary gearbox.

***Lekon***

## Applications

- This CNC nesting table can perform various operations - cutting, drilling, routing, and grooving, making it a versatile tool for producing cabinet parts, furniture components, and custom wood products.

# Technical Specifications

## General Specifications

Working Size	xx"*xx"
Transmission	"X" and "Y" rack and pinion drive, "Z" ball screw drive
Spindel Sower	Italy 9 kW HSD (ISO)
Spindle Max Speed	24000 RPM
Driving System	Japan YASKAWA servo motor
Reducer	Japan SHIPMO reducer
Table Structure	Single-layer vacuum table
Vacuum Pump	1 set 5.5 kW Becker vacuum pump LTLF250
Vacuum Zones	1/4/6/8/10
Traveling Speed	80 m/min
Working Speed	25 m/min
Tool Magazine	Linear (fixed position)
Tool Slots	8/12
Guide Rail	Japan THK guide rail
Tool Sensor	Automatic tool sensor
Controller	Taiwan Syntec control system
Machine Weight (Approximate)	1500Kg

## Electrical

Operating Voltage	380v / 3 Phase / 60 Hz, (220v Optional)
Amperage	65 Amps at 380v
Total Connected Load	25 kW

## Technical Specifications (continued)

### Dust Extraction

Connection Size	200 mm
Air Speed	32 m/sec
Air Volume	3619 m3/h

### Compressed Air

Connection Size	R ½ inch
Pressure Required	100 psi – 7 bar

## Terms and Conditions

**Warranty:** 1 Year (bumper to bumper) labour and parts

**Installation:** Included

**Freight:** Included

**Financing:** Lekon will be pleased to help you with your financing or leasing needs. Please speak to your sales representative for more information.

**Delivery:** Equipment is available for shipping from inventory once an official order, along with a down payment and all technical details, is confirmed, subject to availability. If shipped from the factory, the estimated lead time is 28 to 30 weeks after the order and down payment are received, with all technical specifications clarified. These delivery timelines are estimates and depend on the factory's order volume and receipt of deposit. Once the end customer is notified of completion, the equipment must ship from the manufacturing site within 10 business days. If not shipped within this period, storage fees of \$5.98 per square foot per month will apply, covering the machine and associated components (like vacuum pumps, feeders, safety enclosures, etc.). These storage fees are prorated weekly and are capped at a maximum one-month storage period.

**Payment Terms (Subject to Credit Approval):** A 10% non-refundable deposit is required with the order, followed by 90% before shipment.

**Shipping Terms:** Delivered at Place (DAP) under Incoterms 2010, with the seller covering packaging, freight, and insurance to the specified destination. The buyer assumes risk and responsibility once the equipment reaches the destination but remains unloaded. Customs duties and import taxes, if applicable, are the buyer's responsibility.

# Features and Details

## Taiwan Brand Control System “Syntec”



The Syntec Control System is a versatile and robust CNC (Computer Numerical Control) solution. The system is engineered to optimize the efficiency and precision of automated machinery operations. Its advanced software and hardware integration provide detailed control over machine movements, such as tool positioning, speed, and accuracy, making it ideal for complex cutting, milling, and shaping tasks.

## Italian Brand Spindle “HSD” (Type ISO)



Our CNC comes with HSD Air Cooling ATC 9 kW Spindle with a max of 24000 RPM. The HSD spindle is a powerful, high-performance spindle designed for precision machining across a range of materials, including wood, plastics, and composites. Known for its durability and consistent output, the spindle offers outstanding accuracy at high speeds, making it ideal for demanding CNC applications. It ensures a secure and precise tool change, minimizing vibrations and maximizing stability.

## 8 Position Linear tool change (fixed)



Our CNC is equipped with 8 tool slots to boost versatility, allowing it to handle multiple operations like cutting, drilling, and shaping in a single setup. It reduces downtime by enabling automatic tool changes, which improves efficiency and precision, especially in complex nesting projects. More tool slots also mean greater flexibility for intricate designs, supporting continuous workflow and high-quality output without frequent retooling.

## Japanese Brand YASKAWA Servo Motors

**YASKAWA**



YASKAWA servo motors offer exceptional precision, reliability, and speed. Known for their robust performance, these motors deliver smooth, precise movements essential for intricate CNC work. Their advanced design also reduces wear and tear, lowering maintenance needs and extending machine life.

## Japanese Brand Reducer “Shimpo”

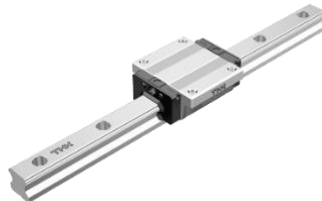
**SHIMPO**



Pairing Shimpo reducers with YASKAWA servo motors takes our CNC performance to the next level. Shimpo reducers provide outstanding torque and smooth, stable motion control, which complements the precision of YASKAWA motors perfectly. This combination ensures high power transmission and accuracy, enabling your CNC to handle demanding tasks effortlessly. With reduced backlash and enhanced efficiency, you'll enjoy precise, reliable operation, making every project faster, smoother, and more accurate.

## Japanese Brand Linear Guide “THK”

**THK**



Using THK Linear Guides in our CNC machine brings unmatched precision and durability to your operations. 5000 Km maintenance-free with LaCS dust proof and QZ self-lubricator technology. Known for their smooth, friction-free motion, THK guides ensure stable, accurate positioning, which is crucial for high-quality, detailed work. Their robust design withstands heavy loads and high speeds, reducing wear and extending the machine's lifespan.

**Lekon**

## Taiwanese Brand Inverter “DELTA”



Delta inverters offer reliable speed control and energy efficiency. With Delta’s advanced technology, you get smooth, stable motor performance, ensuring precise control for even the most detailed work. Designed for durability, these inverters optimize power usage, reducing energy costs while maintaining high performance. Choosing a Delta inverter means improved efficiency and reduced wear on components.

## German Brand Electronic Components “SIEMENS”



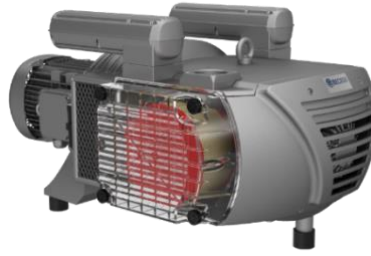
Siemens electronic components deliver unmatched reliability, precision, and advanced control. Known for their high-quality engineering, Siemens components ensure seamless communication between our CNC systems, boosting accuracy and responsiveness. Built to withstand industrial demands, they offer long-lasting performance and reduce downtime, helping keep your operations running smoothly.

## German Brand Wires “IGUS”



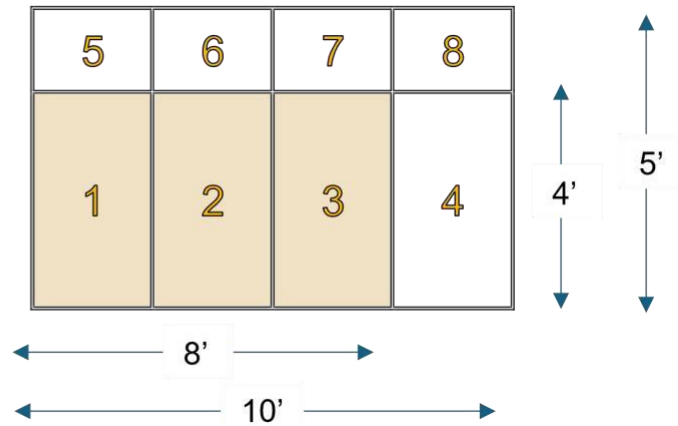
German IGUS wires provide exceptional durability, flexibility, and reliability. Engineered to withstand constant motion and high-stress environments, IGUS wires reduce the risk of wear and signal interference, ensuring smooth and uninterrupted operation. Their longevity minimizes downtime and maintenance costs, keeping our CNC running efficiently over the long term.

## German Brand Vacuum Pump “Becker”



Our CNC machines come equipped with a Becker vacuum pump (VTLF 2.250), providing unparalleled holding power and stability. Becker pumps are renowned for their high suction capacity and efficiency, ensuring that materials stay firmly in place during even the most demanding operations. By using Becker pump, we maximize both reliability and performance, allowing for secure, precise machining without interruptions.

### Single Layer 8 vacuum Zones Bakelite Place (5'x10') *(UPGRADE, EXTRA COST)*



Our CNC machine features 8 suction zones meticulously designed to handle 5'x10', 4'x8', 4'x10' and 5'x8' sheets, as well as small offcuts. Each of these zones can be controlled individually from the operator control station with just the click of a button. The innovative V-groove table design ensures that vacuum suction power is evenly distributed across each zone, optimizing performance and efficiency.



## Pop Up Tool Measuring Sensor



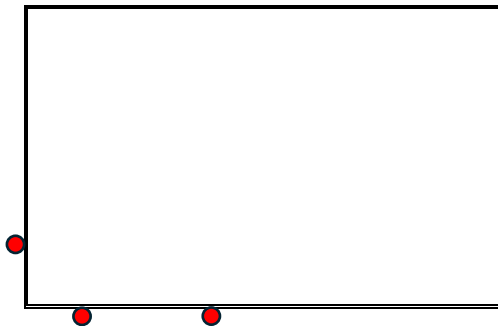
Our pop-up tool measuring sensor is equipped with an air blower that effectively removes dust and debris from the sensor, ensuring precise measurements every time. This innovative feature enhances the sensor's accuracy and reliability, allowing for consistent performance in high-paced production environments. With its quick activation, the air blower ensures that the sensor is always ready for use, minimizing downtime and maximizing productivity. Say goodbye to manual cleaning and enjoy seamless operations with our advanced measuring technology.

## Mozaik Subscription for Free for 6 months



Mozaik is one of the leading software companies who are focused on cabinet manufacturing industry. We are pleased to offer 6 months free subscription for one seat with purchase of our CNC.

## Reference Pins and Guide Rails



Our CNC machine pins are meticulously designed for optimal

precision and ease of use, featuring 3 strategically placed reference pins around the table: 1 at the front and 2 on the right side. This eliminates alignment guesswork, reduces setup time, and minimizes waste, allowing for consistent quality across projects. Reference pins bring efficiency and reliability to your workflow, making every cut count and helping you achieve flawless results effortlessly. **(If 4 or 6 Vacuum zones selected, 3 additional reference pins are added at the diagonal corner)**

## Helical Rack and Pinion Gear for X and Y Axes



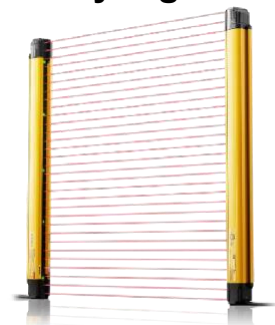
Our CNC machines are equipped with high-quality helical rack and pinion gears on “X” and “Y” axes. This type of gear elevates performance, precision, and durability to meet the demands of modern manufacturing. Helical gears are engineered with angled teeth that engage gradually, providing smoother motion and significantly reducing noise and vibration during operation. This smoothness translates to more accurate positioning. Additionally, the helical design distributes load more evenly across the teeth, resulting in higher load-bearing capacity and longer-lasting.

## Ball Screw Gear for Z Axes



Ball screw gears are the gold standard in CNC machinery, designed to deliver unmatched accuracy, efficiency, and reliability. Ball bearings reduce friction, and ensure smooth, accurate positioning, perfect for high-precision tasks. Less friction also means lower maintenance and energy costs. Consistent, repeatable quality and reliable, high-speed performance.

## Safety Light Curtain



Our CNC is supplied with a pair of safety light curtain. This can give you a peace of mind that every job is performed with maximum safety, without compromising productivity. It allows for safe, handsfree monitoring and enables quick emergency stops, ensuring a safe environment while maintaining efficient workflow. This feature not only helps in compliance with safety regulations but also demonstrates a commitment to the well-being of your team.

## Safety Fence



At our company, safety isn't just a priority - it's a commitment. That's why every CNC machine we offer is equipped with comprehensive safety fencing around the entire perimeter where protection is essential. This fencing acts as a reliable safeguard, creating a secure workspace for operators and staff, ensuring safe operations at every stage. In short, we're committed to equipping your workspace with the highest standards of safety, so you can focus on what matters - getting the job done with confidence and care.



Our CNC comes with all necessary duct hoses. 200 mm wide 20 feet long main duct hose. It is **\$1000 in saving.**

## Dust Extraction Flexible Hose

